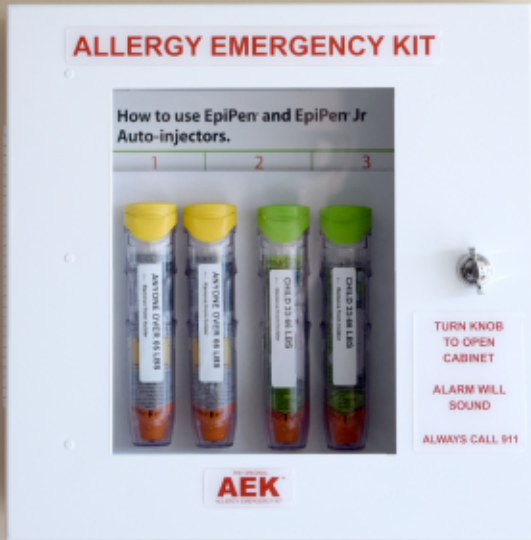


Are You Ready For New Epinephrine Legislation?



NON-LOCKING CABINET WITH ALARM

Product Number: EN9376 | Dimensions: 13" x 13" x 4"

THE ORIGINAL Allergy Emergency Kit™ EPINEPHRINE STORAGE CABINETS

State and Federal legislation is being passed as we speak which permits - and in some cases requires - a "stock" or "undesignated" supply of epinephrine auto-injectors in school buildings. Why keep your public auto-injectors in your office when this cabinet puts them at likely points of need throughout your buildings? With the familiar look of an AED cabinet, this patent-pending "break-glass" design is meant to reconcile "secure, locked" and "secure but not locked" versions of legislation. The "glass" window is a proprietary material that breaks safely when hit with attached hammer. Don't let your expensive auto-injectors get stolen or vandalized – and don't let your life-saving epinephrine get locked away in the nurse's office where it may not be accessible 24/7/365!

Hallway & Lunchroom Cabinets:

Our Flagship Products!

This wall-mounted cabinet is intended to be installed in the school lunch room or in corridors close to eating areas (in case of food allergies) and exit doors (in case of bee stings). Whether locked or not, the patent-pending design allows for easy access to the emergency supplies inside. The Velcro back panel allows you to organize any combination of epinephrine auto injectors, asthma inhalers or other emergency supplies as appropriate for the age and allergy/asthma risks in your building. Signage options allow you to clearly indicate kit contents. Kit includes installation anchors, 3D signage to mount above the cabinet and all needed Velcro. An optional vandalism alarm is available for the unit.

Kits are also available in other languages!

Replacement Window: EN9346
Replacement Stock Epinephrine Labels: EN9369



LOCKING CABINET WITH BREAKAWAY WINDOW

Product Number: EN9337
Dimensions: 13" x 13" x 4"



COMBINATION AED & ALLERGY EMERGENCY KIT

Product Number: EN9392
Dimensions: 13" x 13" x 4"



ECONOMY AEK CASE FOR PUBLIC AREAS

Product Number: EN9395
Dimensions: 8" x 10" x 2"

Cabinet Refill Kit



Hallway Cabinet Refill Kit: EN9390

Includes weight guidance labels for auto-injectors (33-66 lbs & Over 66 lbs) as well as Velcro strips and dots to hang new emergency supplies. Contains materials to restock your cabinet with 4-6 auto-injectors. (Medication not included.)

AED/AEK Conversion Kit



This kit provides supplies needed to convert your existing 14" x 14" AED cabinet into a dual-function AED/AEK cabinet.

Product Number: EN9393

For the Nurse's Office:

All nurse's office versions include the AEK VELCRO®/Polybag labeling system



32-Unit Cabinet

FOR EPINEPHRINE AUTO-INJECTORS
 Dimensions: 26" x 17" x 4"
 Cabinet Only: EN9338
 Full Kit (Evac Bag & Sign): EN9374
 Replacement Window: EN9344
 Privacy Window: EN9345



16-Unit Cabinet

FOR EPINEPHRINE AUTO-INJECTORS
 Dimensions: 17" x 17" x 4"
 Cabinet Only: EN9339
 Full Kit (Evac Bag & Sign): EN9373
 Refill Kit: EN9353
 Replacement Window: EN9366
 Privacy Window: EN9367



Inhaler Cabinet

WITH SPACE FOR 20 INHALERS
 Dimensions: 26" x 17" x 5.5"
 Cabinet Only: EN9340
 Full Kit (Evac Bag & Sign): EN9375
 Refill Kit: EN9357
 Replacement Window: EN9344
 Privacy Window: EN9345

Locking Cabinets With Breakaway Emergency Access

"Full Kit" includes 3D Sign and evacuation bag designed to fit the back panel of your cabinet

"Refill Kit" includes polybags and velcro needed to install new or replacement auto-injectors or inhalers.



32-Unit Panel

FOR EPINEPHRINE AUTO-INJECTORS
 Dimensions: 15" x 24"
 Panel Only: EN9359
 Full Kit (Evac Bag & Sign): EN9370



16-Unit Panel

FOR EPINEPHRINE AUTO-INJECTORS
 Dimensions: 15" x 15"
 Panel Only: EN9368
 Full Kit (Evac Bag & Sign): EN9371



Inhaler Panel

WITH SPACE FOR 20 INHALERS
 Dimensions: 15" x 24" x 4"
 Panel Only: EN9360
 Full Kit (Evac Bag & Sign): EN9372
 Refill Kit: EN9357

Velcro Panel Storage System Without Cabinet or Lock

"Full Kit" includes 3D Sign and evacuation bag designed to fit the entire wall panel at once.

"Refill Kit" includes polybags and velcro needed to install new or replacement auto-injectors or inhalers.

AEK Labeling System

Know who medication belongs to at a glance!

Our epinephrine cabinets and storage panels are intended for high density storage of auto injectors and inhalers but to do so it is important to have the right labels. Our kit includes perfectly sized clear sleeves, plus a free label printing app and Word template on our website so you can print labels just like in our product photos.

AllergyEmergencyKit.com/Labels



Polybag Refill Kits

Epinephrine Auto-injectors:

Single EpiPen: EN9353
 Double EpiPen: EN9354
 Auvi-Q: EN9355
 TwinJect: EN9356
 Generic: EN9388

Inhalers:

Standard Inhalers: EN9357
 Chambers & Spacers: EN9358



Economy AEK Case

FOR EPINEPHRINE AUTO-INJECTORS
 Product Number: EN9395
 Dimensions: 17" x 17"
 Refill Kit: EN9353

Evacuation & Specialty Bags:



Field Trip Backpack

FOR AUTO-INJECTORS & ASTHMA INHALERS
 Product Number: EN9378
 Dimensions: 17" x 17"



Field Trip Fanny Pack

FOR AUTO-INJECTORS & INHALERS
 Standard (Pictured): EN9397
 Dimensions: 3.5" x 10.5"
 Large Pack: EN9414



Evac Bag

32-Unit Epinephrine Bag: EN9351
 Dimensions: 26" x 17"
 16-Unit Epinephrine Bag: EN9365
 Dimensions: 17" x 17"
 20-Unit Inhaler Bag: EN9352
 Dimensions: 26" x 17"



Interior Velcro Panels feature AEK labeling system



Athletic Coach

INSULATED OUTDOOR BAG
 Product Number: EN9386
 Dimensions: 26" x 17"



Designed to fit the back panel of cabinets & panels, not loose auto-injectors & inhalers.

Signs:



EPINEPHRINE AUTO-INJECTORS
Product Number: EN9341
Dimensions: 7" x 10" x 5"



ALBUTEROL INHALERS
Product Number: EN9342
Dimensions: 7" x 10" x 5"



EPINEPHRINE & ALBUTEROL
Product Number: EN9343
Dimensions: 7" x 10" x 5"



EPINEPHRINE & AED
Product Number: EN9382
Dimensions: 7" x 10" x 5"

AED by AEK:



AED Cabinet

Dimensions: 17" x 17" x 5.5"
Product Number: EN9412
Replacement Window: EN9344

AEK & AEK COMBO CABINET

Product Number: EN9392
Dimensions: 13" x 13" x 4"

AEK CONVERSION KIT FOR EXISTING AED CABINETS

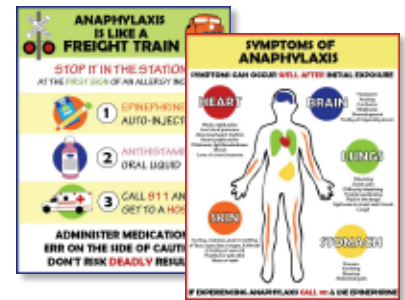
Product Number: EN9393
Dimensions: 13" x 13" x 4"



AED HALLWAY SIGN

Dimensions: 7" x 10" x 5"
Product Number: EN9411

Anaphylaxis Posters



"Anaphylaxis is a Freight Train": EN9362
"Symptoms of Anaphylaxis": EN9363
Dimensions: 16" x 20"

Overdose Protection:



LOCKING CABINET WITH BREAKAWAY WINDOW

Product Number: EN9402
Dimensions: 13" x 13" x 4"

In addition to epinephrine, there is a growing need for another life-saving drug: Naloxone, which counteracts the devastating effects of opioid overdose, and is also available in an auto-injector. The bright purple color of Overdose Emergency products easily differentiates them from the red epinephrine and asthma Allergy Emergency products. The locking, wall-mounted model of the Overdose Emergency Kit has all the same innovative features as the Original Allergy Emergency kit, such as a break-glass feature and velcro back panel, but comes with instructions for the use of Naloxone auto-injectors. The Emergency Case can be velcro mounted to a wall or stowed in the trunk of a police or first responder vehicle.

Kits are also available in other languages!

Replacement Window: EN9346



POLICE/FIRE/FIRST RESPONDER NON-LOCKING CASE

Product Number: EN9408
Dimensions: 13" x 13" x 4"



Overdose Emergency Kit 3D Hallway Sign

FOR NALOXONE AUTO-INJECTORS
Product Number: EN9409
Dimensions: 7" x 10" x 5"



Overdose Emergency Kit Individual Bag

FOR NALOXONE AUTO-INJECTORS
Product Number: EN9410
Dimensions: 5" x 7"

Consumer Products:

Home and Classroom Panel



Make emergency medication visible.

Our Velcro backed panel gives you the flexibility to mount any brand/model of auto-injectors, inhalers, or other medication. Each time a new caregiver comes into your home, you can show them the prominent display knowing that it is hard to forget!

Allergy Emergency Kit: EN9361
Asthma Emergency Kit: EN364
Dimensions: 8" x 10"

Medication Self-Carry Bag



Don't focus on style - focus on function.

When seconds count, you want a teacher or Good Samaritan to be able to find your child's epinephrine auto-injector or asthma rescue inhaler easily. Make it RED and scream "HERE IT IS!"

"This is My Epinephrine" Bag: EN9379
"This is My Rescue Inhaler" Bag: EN9415
"Emergency Medication" Bag: EN9380
"I have an Allergy" Fanny Pack: EN9416
Dimensions: 5" x 7"

THE ORIGINAL Allergy Emergency Kit™

EPINEPHRINE STORAGE CABINETS

Designed by an Allergy Parent



My name is Brandon Wilson. When my daughter was just two years old we discovered, the hard way, that she was highly allergic to cashews (and other tree nuts). As I followed the ambulance to the hospital I realized that would now be in a constant state of alert, of anxiety, that our wonderful children are wandering through a world where nuts and other allergens are ubiquitous.

With this in mind, I created a wall-mounted Allergy Emergency Kit™ which puts Benadryl and Epinephrine in a secure, conspicuous and 24/7/365 accessible place - appropriate for anywhere where an anaphalactic allergic reaction could happen - especially school lunch rooms (nuts), gym class (bee stings) and seafood restaurants (shellfish).

MacGILL
DISCOUNT MEDICAL AND SCHOOL NURSE SUPPLIES

SCHOOL HEALTH®

School Kids Healthcare

School Nurse Supply
Quality Products & Superior Service - At the Best Price

LifeSafety Solutions®

mooremedical
Supporting Health & Care

KMS Medical
medically educated. morally driven.

SOURCE PRODUCTS LTD.

School Specialty™

Order Online
Purchase Orders Accepted
www.allergyemergencykit.com

Phone: 773-932-7483

E-mail: illinoissupply@gmail.com

P.O. Box 574 Frankfort, IL 60423